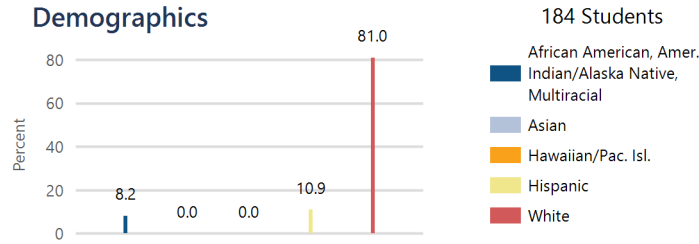




Wallace County Schools USD 241

521 N. Main, Sharon Springs, KS 67758
(785) 852-4252
usd241.org

System Accreditation Status: **Accredited**
ESSA Annual Meaningful Differentiation: **Exceeding**
Grades: **PK-12**
Superintendent: **Christy Hammer**

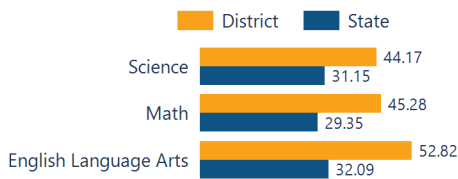


District Kansans Can Star Recognition

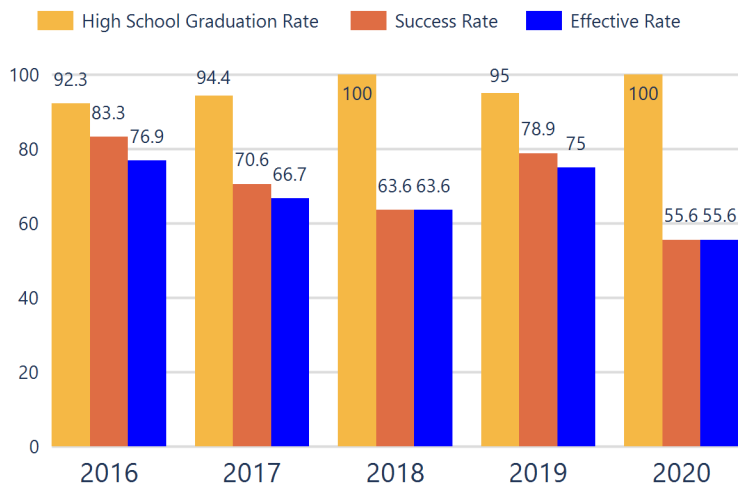
	Gold	Silver	Bronze	Copper
Social-Emotional Growth				
Kindergarten Readiness				
Individual Plan of Study				
Academically Prepared for Postsecondary				★
Civic Engagement				
High School Graduation	★			
Postsecondary Success		★		

Academically Prepared for Postsecondary Success

The percentage of students who scored at Levels 3 and 4 on the state assessment.



District Postsecondary Effectiveness



Kansans CAN lead the world!
Graduation
95%
Effective Rate 70-75%

Five-Year Graduation Avg
95.8%

Five-Year Success Avg
72.1%

Five-Year Effective Avg
69.0%

95% Confidence Interval for the Predicted Effectiveness Rate
60.4 - 64.0%

The numerator and denominator in the Five-Year Averages contain total student counts over five years (2016-2020) and are rounded to the nearest whole number.

- Graduation Rate:** The 4-year adjusted cohort graduation rate is the number of students who graduate in four years with a regular high school diploma divided by the number of students who entered high school as 9th graders four years earlier (adjusting for transfers in and out).
- Success Rate:** A student must meet one of the four following outcomes within two years of High School graduation.
 - Student earned an Industry Recognized Certification while in High School.
 - Student earned a Postsecondary Certificate.
 - Student earned a Postsecondary Degree.
 - Student enrolled in Postsecondary in both the first and second year following High School graduation.
- Effective Rate:** The calculated Graduation Rate multiplied by the calculated Success Rate.

GRADUATION RATE

The four-year adjusted cohort graduation rate is the percentage of students in a cohort, adjusted for transfers into and out of the school, district, or state, who graduate with a regular high school diploma within four years of entering high school.

100.0%

State: **District ESSA Operating Expenditures Per Pupil**

89.3

Expenditures reflect those for the normal day-to-day operation of schools as reported by the Local Education Agency. The following expenditures are excluded: capital outlay, school construction and building improvements, equipment and debt services.

\$20,683

ATTENDANCE RATE

Rate at which students are present at school, not including excused or unexcused absences.

94.5%

State: 92.1

CHRONIC ABSENTEEISM

Percentage of students who miss 10% or more of school days per year either with or without a valid excuse.

9.8%

State: 25.4

[Click here for State Financial Accountability.](#)

DROPOUT RATE

The dropout rate is calculated annually and reflects the number of seventh–twelfth grade students who drop out in any one school year. A dropout is any student who exits school between October 1 and September 30 with a dropout EXIT code AND does not re-enroll in school by September 30.

N/A

State: 1.4

Wallace County Schools USD 241

K.S.A. 72-5178 Accountability Report 2021-2022



District Academic Success

State Assessment scores are displayed by student subgroup over three years time in three subjects: Math, English Language Arts (ELA), and Science. Assessment scores are not available for the 2020 school year.

ALL STUDENTS

	2019-20			2020-21			2021-22		
	Math	ELA	Sci	Math	ELA	Sci	Math	ELA	Sci
Level 1	N/A	N/A	N/A	20.00	21.00	21.95	14.15	11.32	23.25
Level 2	N/A	N/A	N/A	45.00	44.00	29.26	40.56	35.84	32.55
Level 3	N/A	N/A	N/A	29.00	29.00	34.14	33.96	38.67	32.55
Level 4	N/A	N/A	N/A	6.00	6.00	14.63	11.32	14.15	11.62

FREE AND REDUCED LUNCH STUDENTS

	2019-20			2020-21			2021-22		
	Math	ELA	Sci	Math	ELA	Sci	Math	ELA	Sci
Level 1	N/A	N/A	N/A	25.00	25.00	18.75	19.35	9.67	36.36
Level 2	N/A	N/A	N/A	52.77	47.22	37.50	45.16	48.38	36.36
Level 3	N/A	N/A	N/A	16.66	22.22	37.50	25.80	29.03	27.27
Level 4	N/A	N/A	N/A	5.55	5.55	6.25	9.67	12.90	0.00

STUDENTS WITH DISABILITIES

	2019-20			2020-21			2021-22		
	Math	ELA	Sci	Math	ELA	Sci	Math	ELA	Sci
Level 1	N/A	N/A	N/A	N/A	N/A	N/A	N/A	N/A	N/A
Level 2	N/A	N/A	N/A	N/A	N/A	N/A	N/A	N/A	N/A
Level 3	N/A	N/A	N/A	N/A	N/A	N/A	N/A	N/A	N/A
Level 4	N/A	N/A	N/A	N/A	N/A	N/A	N/A	N/A	N/A

AFRICAN-AMERICAN STUDENTS

	2019-20			2020-21			2021-22		
	Math	ELA	Sci	Math	ELA	Sci	Math	ELA	Sci
Level 1	N/A	N/A	N/A	N/A	N/A	N/A	N/A	N/A	N/A
Level 2	N/A	N/A	N/A	N/A	N/A	N/A	N/A	N/A	N/A
Level 3	N/A	N/A	N/A	N/A	N/A	N/A	N/A	N/A	N/A
Level 4	N/A	N/A	N/A	N/A	N/A	N/A	N/A	N/A	N/A

HISPANIC STUDENTS

	2019-20			2020-21			2021-22		
	Math	ELA	Sci	Math	ELA	Sci	Math	ELA	Sci
Level 1	N/A	N/A	N/A	9.09	18.18	N/A	14.28	7.14	N/A
Level 2	N/A	N/A	N/A	63.63	63.63	N/A	64.28	28.57	N/A
Level 3	N/A	N/A	N/A	27.27	18.18	N/A	21.42	64.28	N/A
Level 4	N/A	N/A	N/A	0.00	0.00	N/A	0.00	0.00	N/A

N/A: To protect student privacy, when a subgroup has fewer than 10 students, the data are not displayed.

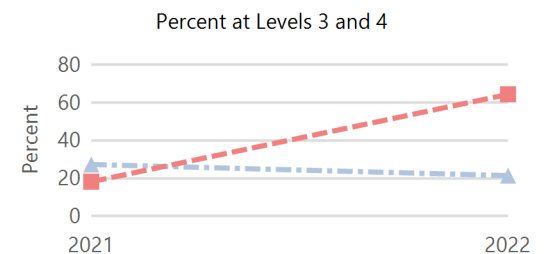
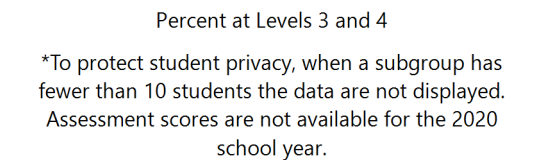
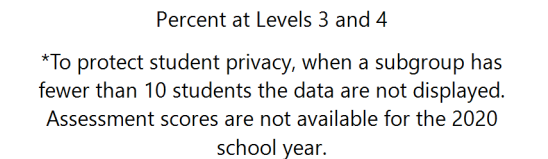
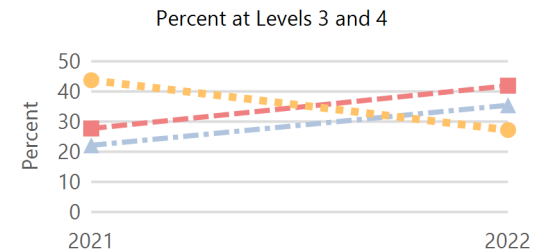
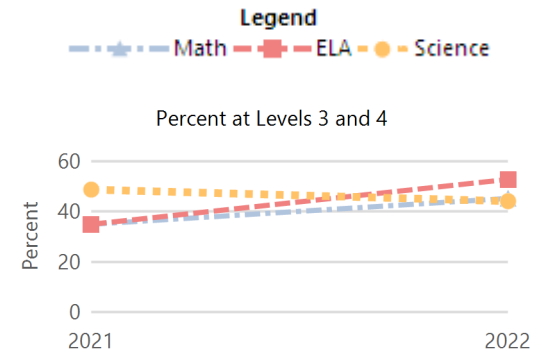
ACT Performance (2022 School Year)

ACT is a national college admissions exam that includes subject level tests in English, Math, Reading and Science. Students receive scores that range from 1 to 36 on each subject and an overall Composite score. This report provides the average Composite score for the 2022 graduating seniors who took the ACT as sophomores, juniors, or seniors.

Note: Not all eligible students completed an ACT.



Academically Prepared for Postsecondary Success



District	20.8
State	19.8